



**SASOL**



# *Purpose*

**Innovating for a  
better world**

**Capital Markets Day 2021**



**GROWING WITH OUR UNIQUE CHEMISTRY**

**Brad Griffith**

Executive Vice President: Chemicals



# What you will *hear today*



Well-invested,  
advantaged  
**global asset  
base**

Embracing  
**sustainability**

Unique  
portfolio and  
**technology  
leadership**

Shift to high-  
margin  
**specialty  
solutions**

OUR

**AMBITION**

GROW SHARED VALUE WHILE  
ACCELERATING OUR TRANSITION



## FOUNDATION FOR FULL POTENTIAL

- Streamlined **customer-centric** organisation to unlock value
- LCCP **fully operational**
- Well-invested global assets **positioned for growth**



## TRANSFORMATION IMPERATIVES<sup>1</sup>

- LCCP commercial **ramp up**; value unlock from Sasol 2.0
- Lake Charles site positioned as a **sustainability hub**
- Leverage **renewable feedstocks** for lower carbon solutions



## SHIFT TO HIGHER MARGIN SPECIALTY SOLUTIONS

- Strengthen and **extend leadership positions** in Essential Care and Advanced Materials
- Growth guided by **innovation** and **customer collaboration**
- **Partner of choice** for sustainable chemicals in Africa with our **FT know-how**

# Changing environment provides *exciting opportunities*

## OPPORTUNITIES TO DECARBONISE PRODUCTION



As both a **consumer and solutions provider** for renewables

## PARTNERING TO ANSWER THE SUSTAINABILITY CALL



Our branched alcohols **lessen environmental impact** for fabric care

## GROWTH IN WASTE-REDUCING AND CIRCULAR SOLUTIONS



Our alcohols enable customers to **reduce waste significantly**

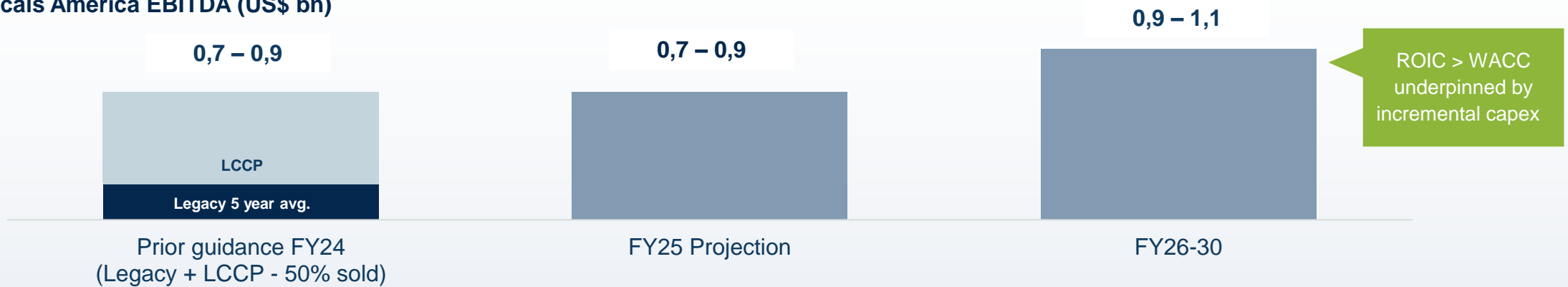
## SOLUTIONS ALIGNED TO POWERFUL MEGATRENDS



**Supplier of choice** for key components in battery materials

# Delivering value from our US operations

## Chemicals America EBITDA (US\$ bn)



### OUR COMMERCIAL RAMP UP

- **LIP JV** results growing with **commodity cycle**; long term equity aligned with future strategy
- **ZAG** commercial ramp-up: **volume growth** followed by **margin uplift**

### HIGH VALUE GROWTH PROJECTS

- **Low CAPEX** debottlenecking and targeted expansion projects with **short payback periods**
- Value creation builds upon **experience** with our **European assets**



# Lake Charles Site - further growth as a *sustainability hub*



**MULTIPLE ATTRACTIVE OPPORTUNITIES FOR EXPANSION AS A SUSTAINABILITY HUB WITH PARTNERS**

# Actioning our chemistry and partnerships for *circular solutions*

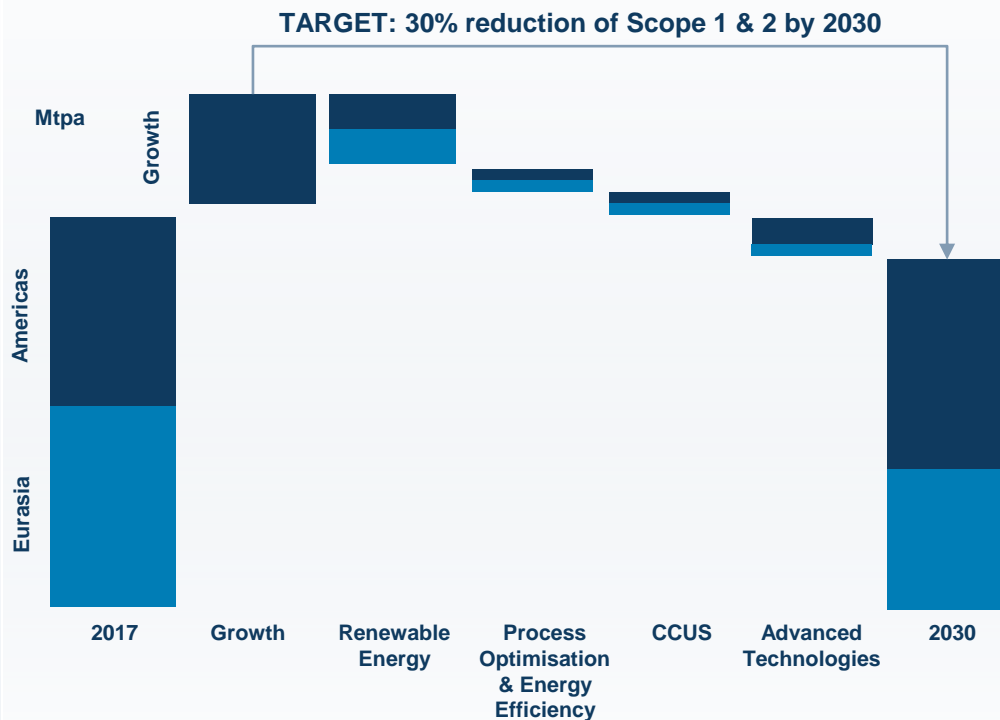


1. Other indirect emissions relating to Category 1, 10 and 12



# Targeting a 30% *GHG reduction* by 2030

## CLEAR PATH TO REDUCE GHG EMISSIONS



## KEY LEVERS FOR REDUCTION



### Renewable energy

Renewable power purchases for major production sites



Process optimisation through digitalisation and energy efficiency investments



CCUS to capture and convert carbon into chemicals / fuels



Leveraging advanced technologies to achieve target



# Our proprietary technologies offer *distinct advantages*

## CHEMISTRY AND ASSET BASE WELL-ADAPTED TO FLEXIBLE FEEDSTOCKS



**Conventional**



**Recycled**



**Biomass**



**CO<sub>2</sub> + H<sub>2</sub>**



## DURABLE COMPETITIVE ADVANTAGES

### Differentiated Products

- Diverse alcohols & derivatives portfolio
- Unequalled range of specialty aluminas

### Innovation with customers

- Customer-centric business
- Innovation ecosystems, custom solutions

### Advantaged technology /assets

- Well-invested global assets
- Unmatched FT technology know-how

### Market leadership

- Leading positions in Essential Care, Advanced Materials & Chemicals Africa



## COMPELLING SOLUTIONS FOR A BETTER WORLD

“Sunscreen” for plants  
in a warming world



Additives for faster &  
cleaner construction



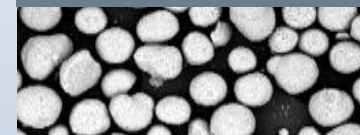
ISOCARB 16 for  
mRNA vaccines



Biodegradable alcohols as  
skin care emollients



Catalysts & carriers for PtX  
production



Surfactants that enhance  
CO<sub>2</sub> sequestration



# Unlocking growth through unique portfolio advantages

ESSENTIAL CARE CHEMICALS	ADVANCED MATERIALS	PERFORMANCE SOLUTIONS	BASE CHEMICALS
			
LEADER IN FABRIC & HOME CARE	PARTNER OF CHOICE	CUSTOM SOLUTIONS	LEADER IN SOUTHERN AFRICA
<ul style="list-style-type: none"> <li>• <b>Broadest alcohols</b> portfolio</li> <li>• Natural and renewable <b>feedstock options</b></li> <li>• Enhanced <b>global footprint</b></li> </ul>	<ul style="list-style-type: none"> <li>• Proprietary <b>alumina technology</b></li> <li>• Calcined coke preferred for <b>battery materials</b></li> <li>• <b>FT leadership</b> supports emerging PtX market</li> </ul>	<ul style="list-style-type: none"> <li>• <b>Custom solutions</b> from alcohols and surfactants portfolio</li> <li>• Branched and unique alcohols provide <b>more optionality</b></li> <li>• Metalworking fluids and lubricants <b>reduce waste</b></li> </ul>	<ul style="list-style-type: none"> <li>• <b>Partner of choice</b> in Southern Africa</li> <li>• <b>Strong</b> marketing and technical <b>presence in Southern Africa</b></li> </ul>



# Our unique portfolio opens up a world of *growth opportunities*



**ESSENTIAL  
CARE CHEMICALS**

**ADVANCED  
MATERIALS**

**PERFORMANCE  
SOLUTIONS**

**BASE  
CHEMICALS**

**STRATEGIC INTENT**

Steady growth

Accelerate growth

High-value growth

Unlock value

**INNOVATION FOCUS**

Leveraging our unique alcohols

Extending specialty products into new markets

High performance & sustainable solutions on leading technologies

Circularity and SA development

**GROWTH RELEVANCE  
(ORGANIC + M&A)**



Growth through partnering

**SUSTAINABILITY**

Renewable & circular traceability

Solutions for growing energy storage & mobility sectors

Better and more with less

Recycling, circular and more with less

**INTENDED SHARE  
FY30+**



**MID-SINGLE DIGIT % CAGR ON EBITDA**

# Growing chemicals with our unique chemistry



## Well-invested, advantaged global asset base

LCCP to full potential

Asset base well-adapted to flexible feedstocks



## Embracing sustainability

Creating opportunities for scope 3 reductions



## Unique portfolio and technology leadership

Expanding market leading positions



## Shift to high-margin specialty solutions

Compelling solutions for a better world

